



115 Chapel Crossing Lane (Lot 2) Weaverville, NC 28787

BEDROOMS

3

BATHROOMS

2 1/2

CAR GARAGES

2

HEATED SQ. FT.

1,608

PRICE

559,990

Interior Highlights

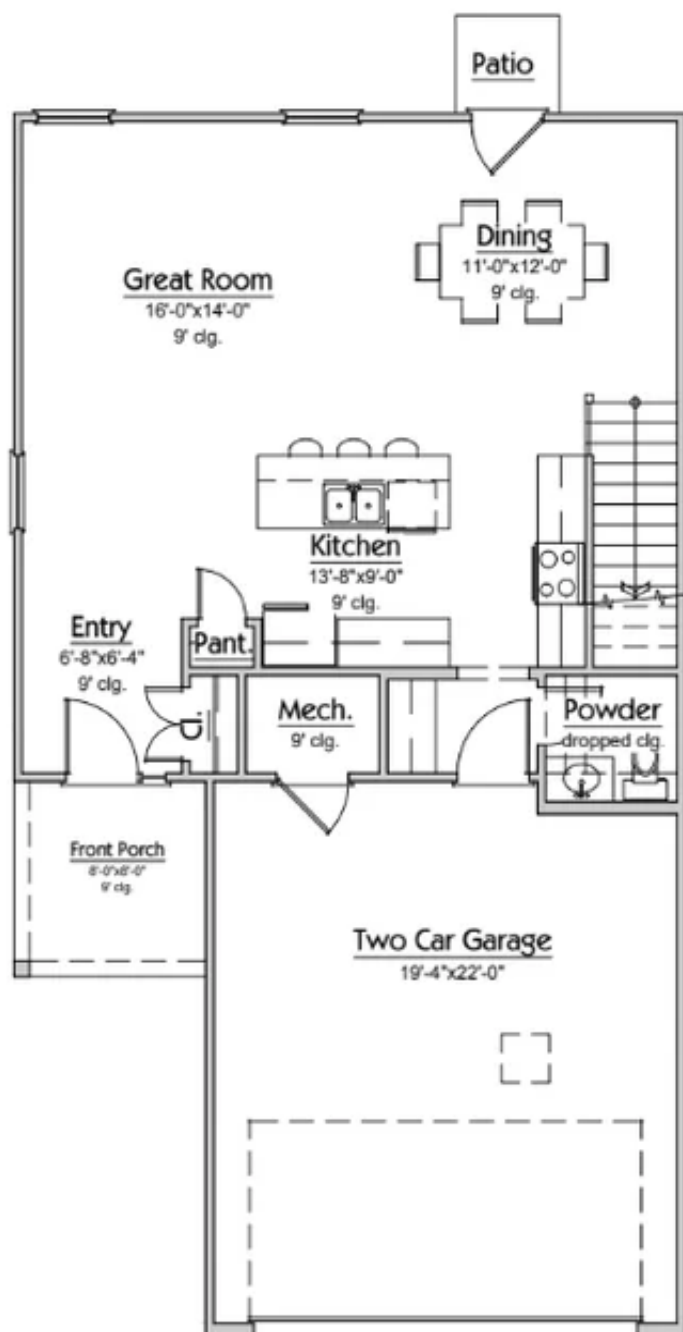
- Matte Black Hardware Package
- Upgraded Frameless Shower/Floor (12x24), and Wall Tile in Primary Bath
- Walk-In Closet in Primary Suite
- 9' Ceilings
- Tray Ceiling in Primary Suite
- Kitchen Island with Sink
- Upgraded Kitchen Cabinets

Exterior Highlights

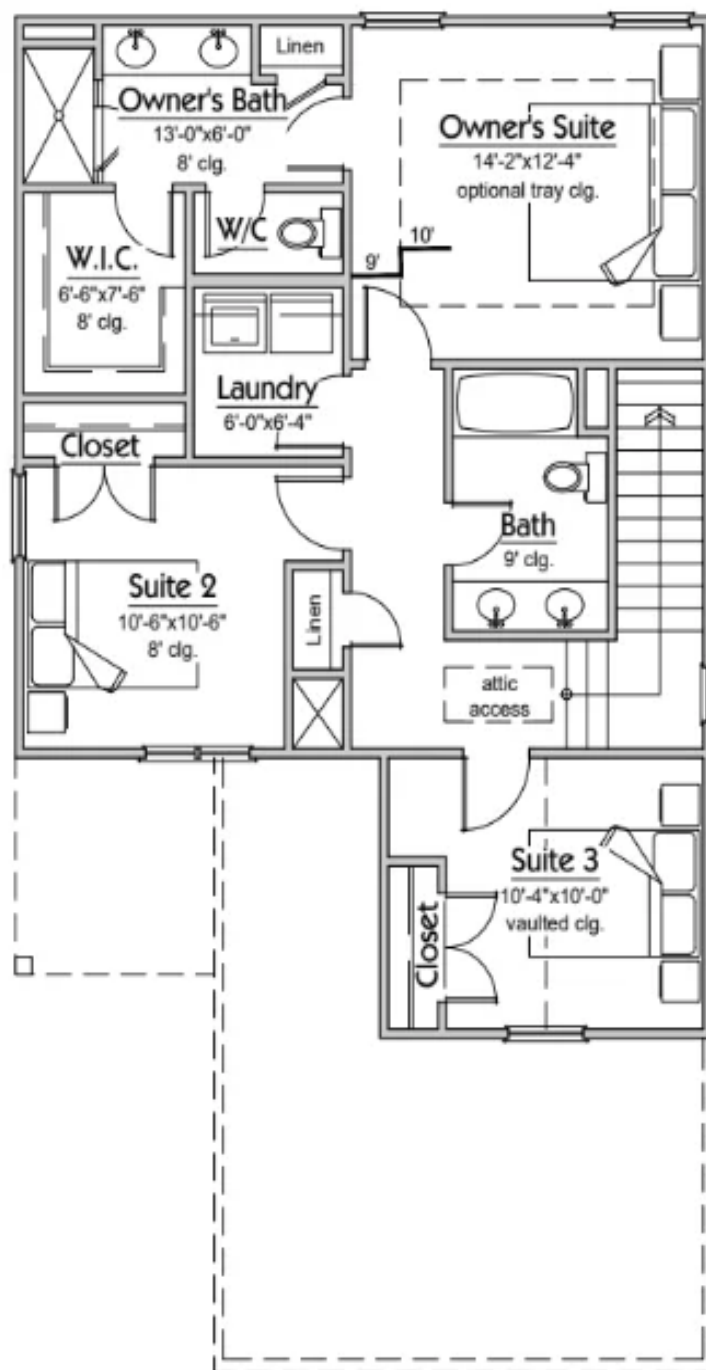
- Walnut Color Front Door and Garage Door
- Board & Batten Exterior
- Covered Front Porch
- Covered Back Porch
- Windows in Garage



Floorplans



Main Level Floor Plan



Upper Level Floor Plan



Gallery

