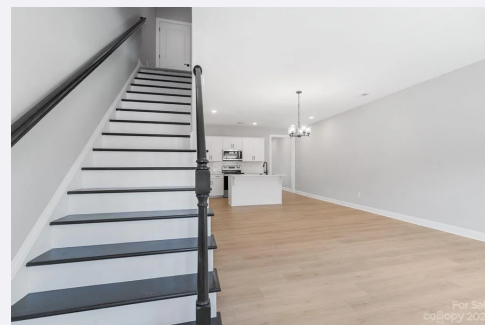




The Lily 1500 Interior Unit

| PRICE | BEDROOMS | BATHROOMS | HEATED SQ FT |
|-----------------------------|----------|--------------------------------|--------------|
| Starting in the mid \$400's | 3 | 2 1/2 | 1640 |
| CAR GARAGES | | READY TO BUILD | |
| 1 Car Garages | | The Springs of North Asheville | |



Home Highlights



EXTERIOR HIGHLIGHTS

- Single Car Garage in Rear
- Covered Front Porch (Some Models)
 - Private Courtyard
- HOA Maintained Exterior



INTERIOR HIGHLIGHTS

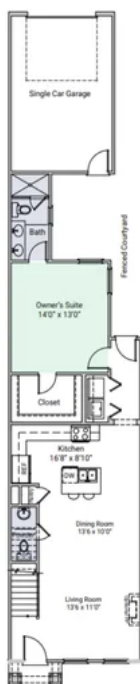
- Open Concept Floor Plan
- Primary Bedroom and En-Suite on Main Level
- Jack and Jill Bathroom on Second Floor
- Dining Area



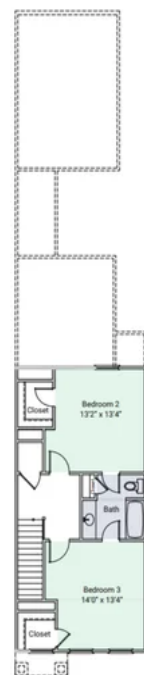


Floor Plans

The Lily 1500 Plan - First Floor



The Lily 1500 Plan - Second Floor





The Lily 1600 Plan



MS
4,12.24

Gallery Images

