

The Laurel II Interior Plan

PRICE	BEDROOMS	BATHROOMS	HEATED SQ FT
Starting at \$489,990	3	3 1/2	2,220
CAR GARAGES		READY TO BUILD	
2 Car Garages		Townes at Maxwell	

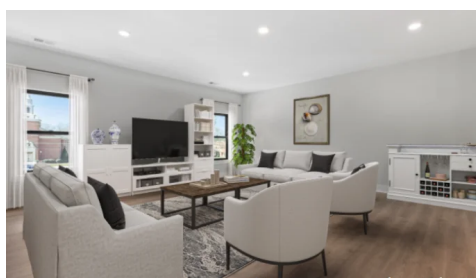


Home Highlights



EXTERIOR HIGHLIGHTS

- 3 Levels
- 2 Car Garage
- Modern Accents Including Exterior Lighting, House Numbers, and Black Windows
- Owner's Suite Balcony



INTERIOR HIGHLIGHTS

- En Suite with Full Bedroom and Bathroom on First Floor
- Drop Zone
- Open Floor Plan with Kitchen, Dining, and Gathering Room
- Large Owner's Suite with Walk-In Closet

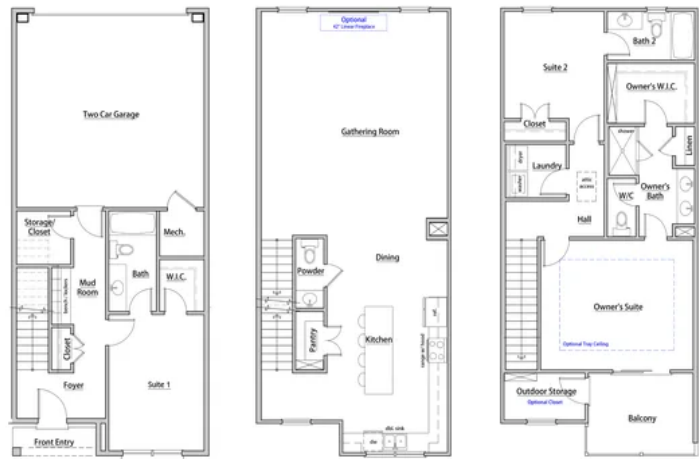




Floor Plans



Townes at Maxwell
The Laurel II
2220 Square Feet



3.30.2025

Gallery Images

