



# The Laurel I Exterior Plan

PRICE	BEDROOMS	BATHROOMS	HEATED SQ FT
Starting at \$530,000	3	3 1/2	2,250
CAR GARAGES		READY TO BUILD	
2 Car Garages		Townes at Maxwell	



## Home Highlights





### EXTERIOR HIGHLIGHTS

- 3 Levels
- 2 Car Garage
- Modern Accents
  - Balcony



### INTERIOR HIGHLIGHTS

- Suite with Full Bathroom on First Level
  - Drop Zone
- Open Floor Plan with Kitchen, Dining, and Gathering Room
- Large Owner's Suite with Walk-In Closet
- Open Floor Plan with Kitchen, Dining, and Gathering Room
  - Quartz Countertops
  - Soft Close Cabinets



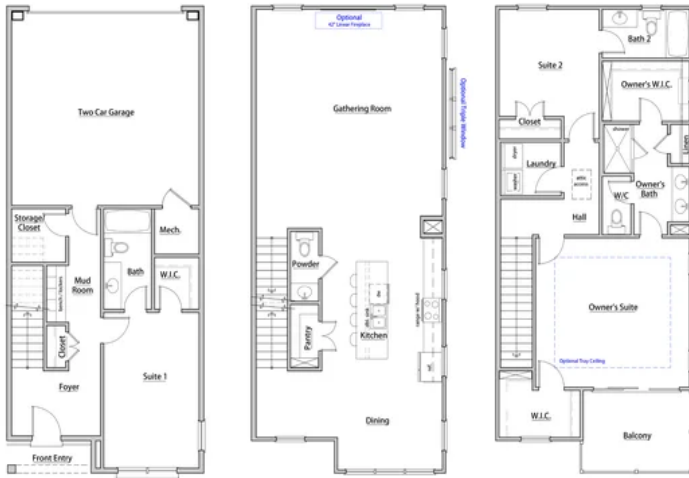
# Floor Plans



MADISON-SIMMONS  
HOMES & COMMUNITIES

MadisonSimmonsHomes.com  
Mike@MadisonSimmonsHomes.com  
803.866.4080

## Townes at Maxwell The Laurel I 2250 Square Feet



1.15.2025

# Gallery Images



04.02.2025