



The Jensen Interior Unit

PRICE	BEDROOMS	BATHROOMS	HEATED SQ FT
Starting at \$425,000	3	2 1/2	1540
CAR GARAGES	READY TO BUILD		
1 Car Garages	Springs of North Asheville		

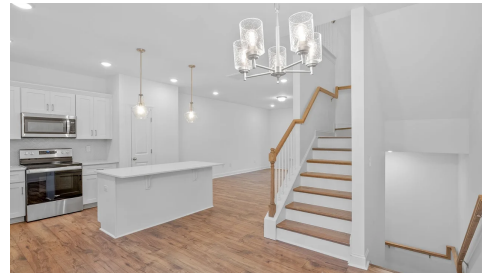


Home Highlights



EXTERIOR HIGHLIGHTS

- Interior Units
- Covered Porch (some models)
- Single Car Garage with Plenty of Storage

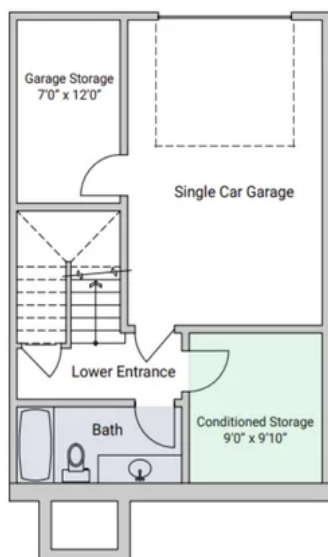


INTERIOR HIGHLIGHTS

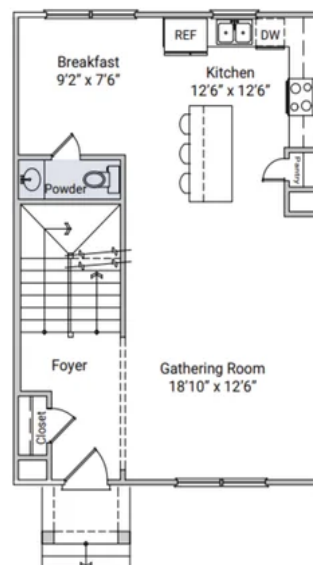
- Open Floor Plan
- Large Owner's Suite with Walk In Closet
- All Bedrooms on Upper Floor
- Full Bathroom in Basement

Floor Plans

The Jensen II 1500 Plan - Garage Level

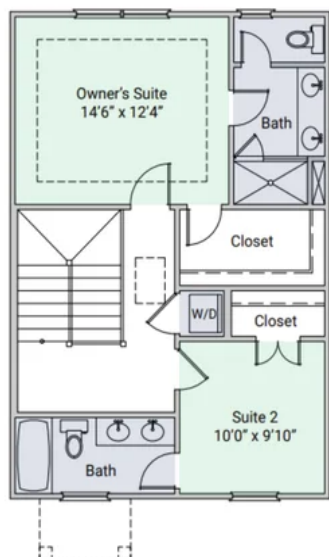


The Jensen II 1500 Plan - Second Level

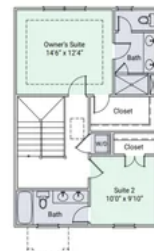
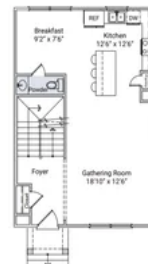
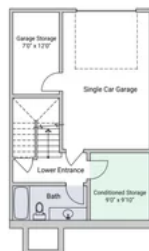




The Jensen II 1500 Plan - Third Level

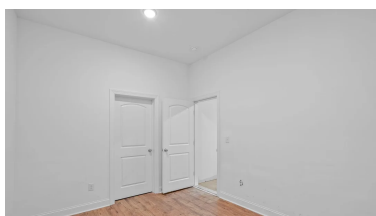
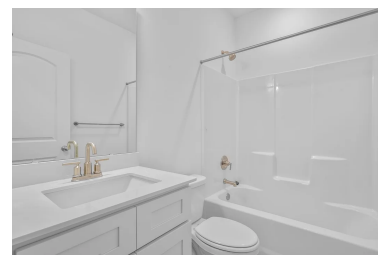
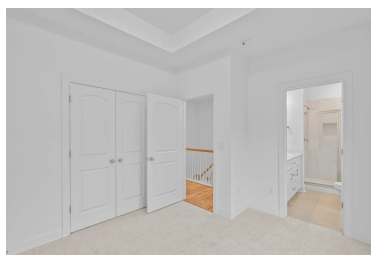
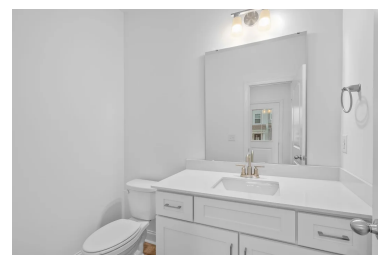


The Jensen II 1500 Plan



4.12.24

Gallery Images



08.28.2025