



# 69 Walnut Springs Drive Asheville, NC 28804

BEDROOMS

**3**

BATHROOMS

**2 1/2**

CAR GARAGES

**1**

HEATED SQ. FT.

**1,540**

PRICE

**419,500**

## Interior Highlights

- Open Concept Main Living Area
- White Soft Close Cabinets
- Stainless Appliances
- Breakfast Nook
- Granite Countertops
- Upgraded Lighting Package
- Flex Space on Lower Level
- 3 Bedrooms, 2 1/2 Baths

## Exterior Highlights

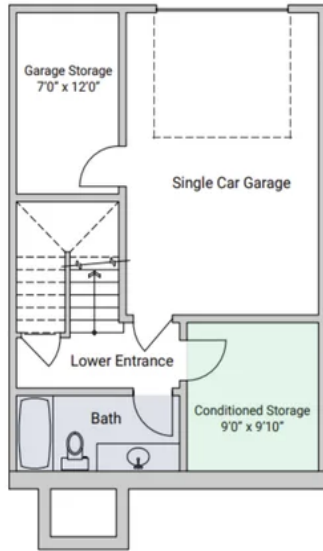
- Craftsman Style Front
- Single Car Garage
- Courtyard
- Interior Unit
- Lawn Maintenance Included in HOA



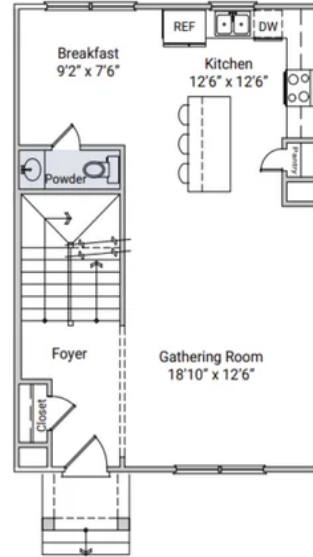


# Floorplans

*The Jensen II 1500 Plan - Garage Level*

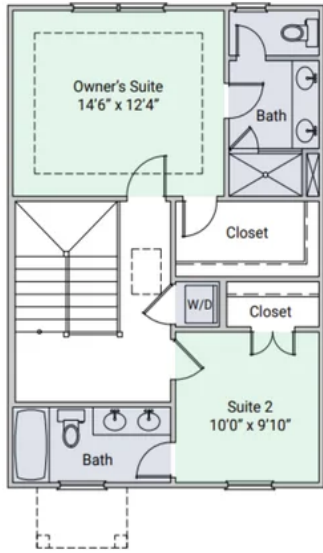


*The Jensen II 1500 Plan - Second Level*

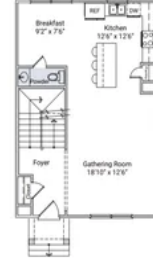
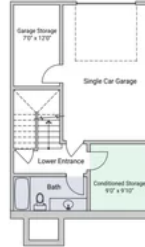




The Jensen II 1500 Plan - Third Level



The Jensen II 1500 Plan



4.12.24



# Gallery

