



55 Walnut Springs Drive Asheville, NC 28804

BEDROOMS

3

BATHROOMS

2 1/2

CAR GARAGES

1

HEATED SQ. FT.

1,540

PRICE

419,500

Interior Highlights

- Open Concept Main Living Area
- White Soft Close Cabinets
- Stainless Appliances
- Breakfast Nook
- Quartz Countertops
- Upgraded Lighting Package
- Flex Space on Lower Level
- 3 Bedrooms, 2 1/2 Baths

Exterior Highlights

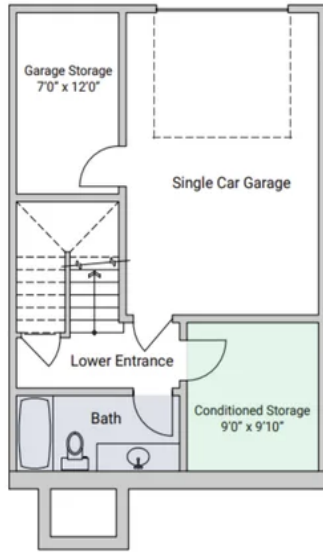
- Craftsman Style Front
- Single Car Garage
- Courtyard
- Interior Unit
- Lawn Maintenance Included in HOA



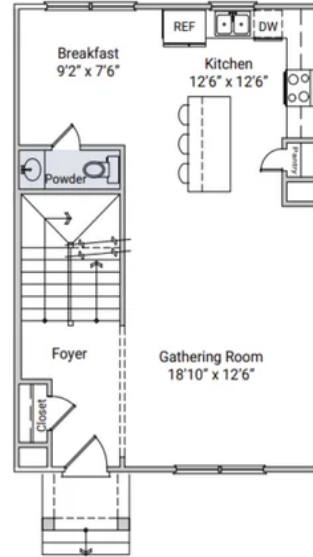


Floorplans

The Jensen II 1500 Plan - Garage Level

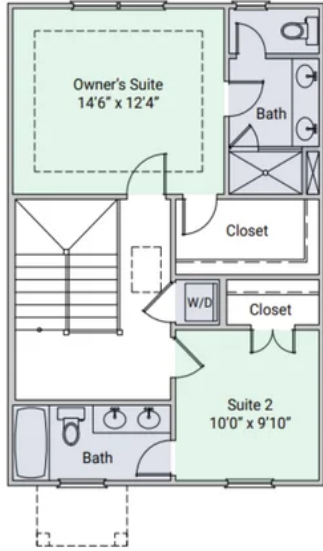


The Jensen II 1500 Plan - Second Level

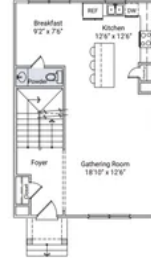
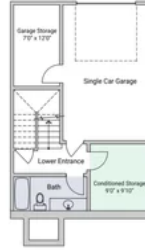




The Jensen II 1500 Plan - Third Level



The Jensen II 1500 Plan

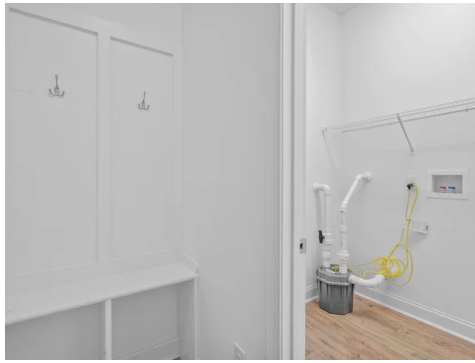


4.12.24



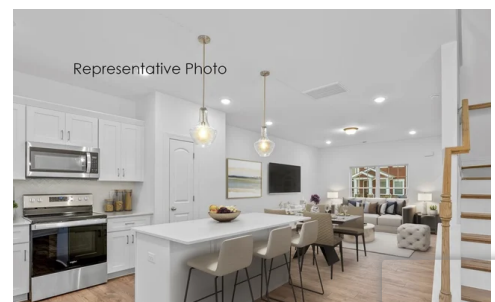


Gallery



prings
28804

MADISON-SIMMONS



Representative Photo





Representative Photo



Representative Photo

