



The Jensen Exterior Unit

PRICE	BEDROOMS	BATHROOMS	HEATED SQ FT
Starting at \$475,000	3	2 1/2	1,818 (includes below ground floor)
CAR GARAGES		READY TO BUILD	
2 Car Garages		Springs of North Asheville	



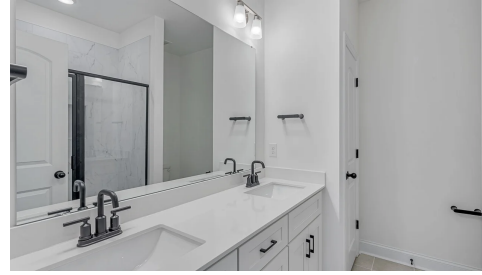
Home Highlights





EXTERIOR HIGHLIGHTS

- 2 Car Garage
- 3 Levels
- Low Maintenance Exterior



INTERIOR HIGHLIGHTS

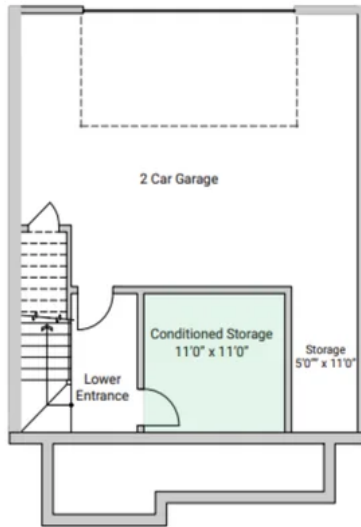
- Open Floor Plan
- Kitchen Island with Eat In Area
- Stainless Appliances
- Large Owner's Suite with Walk In Closet
- Jack and Jill Bathroom for Secondary Bedrooms
- Plenty of Storage



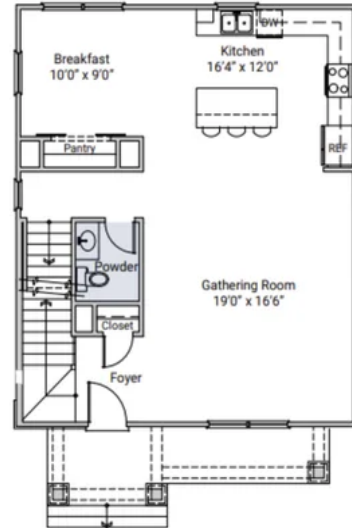


Floor Plans

The Jensen II 1800 Plan - Garage Level

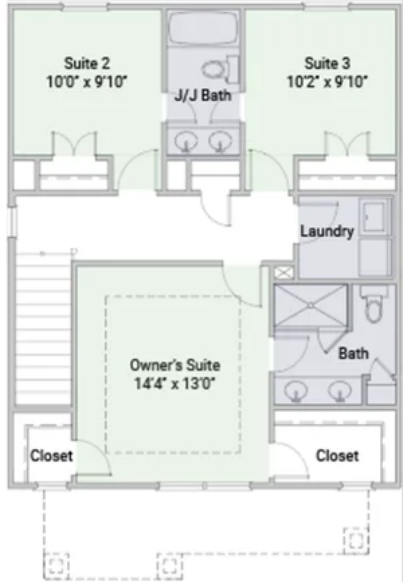


The Jensen II 1800 Plan - Second Level

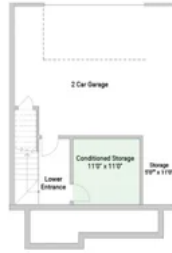




The Jensen II 1800 Plan - Third Level



The Jensen II 1800 Plan



4.12.24

Gallery Images

