



65 Walnut Springs Drive Asheville, NC 28804

BEDROOMS

3

BATHROOMS

2 1/2

CAR GARAGES

2

HEATED SQ. FT.

1,958

PRICE

475,400

Interior Highlights

- Open Concept Main Living Area
- Soft Close Cabinets
- Stainless Appliances
- Breakfast Nook
- Granite Countertops
- Upgraded Lighting Package
- Flex Space on Lower Level Perfect for Office, Home Gym or Play Space
- 3 Bedrooms, 2 1/2 Baths, 3 levels
- Jack and Jill Bathroom for Secondary Bedrooms

Exterior Highlights

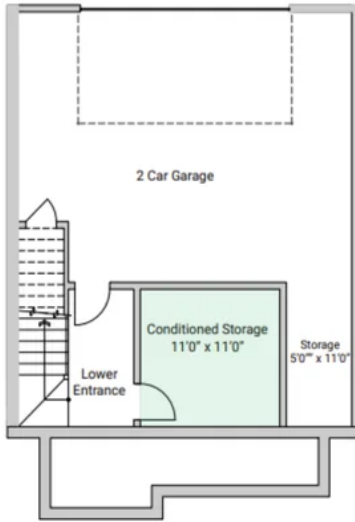
- Craftsman Style Front
- Two Car Garage
- Private Patio
- End Unit
- Lawn Maintenance Included in HOA



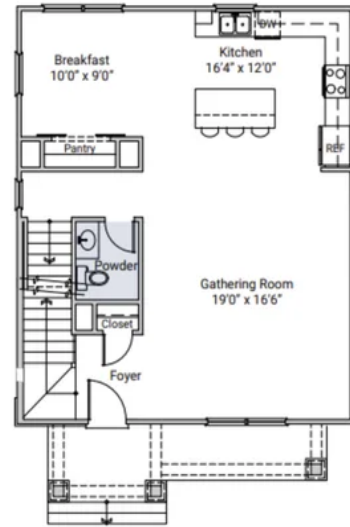


Floorplans

The Jensen II 1800 Plan - Garage Level



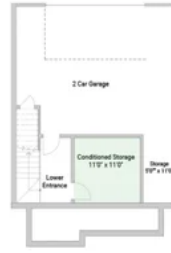
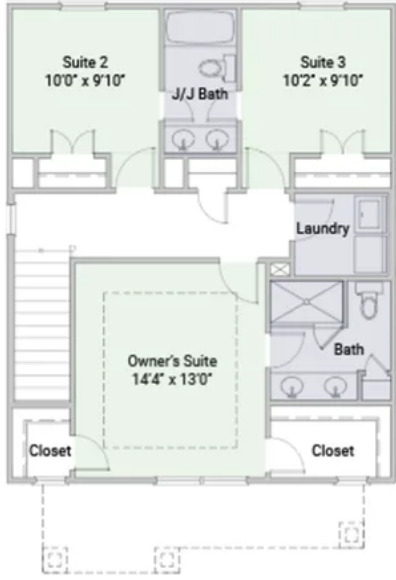
The Jensen II 1800 Plan - Second Level





The Jensen II 1800 Plan - Third Level

The Jensen II 1800 Plan



4.12.24





Gallery

