



# The Jameson

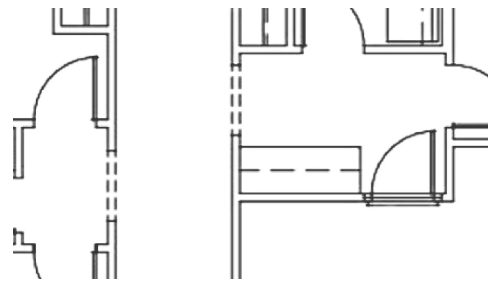
PRICE	BEDROOMS	BATHROOMS	HEATED SQ FT
\$559,990+	3	2 1/2	2110
CAR GARAGES	READY TO BUILD		
2 Car Garages	Chapel Crossing		

## Home Highlights



### EXTERIOR HIGHLIGHTS

- Elevation Options
- Front Load 2-car Garage
- Covered Front Porch
- Optional Outdoor Living Space



### INTERIOR HIGHLIGHTS

- 2,110 Square Feet
- Open Floor Plan
- 2 Story Living
- Large Kitchen Island
- Primary on Main with Large Walk-In Closet
- 9' Ceilings
- Loft Area on Second Level





# Floor Plans



MadisonSimmonsHomes.com  
Brooke@MadisonSimmonsHomes.com  
828.540.7310



## Chapel Crossing

*The Jameson*

2110 Square Feet - 3 BR/2.5BA  
Master on Main



4.28.2025



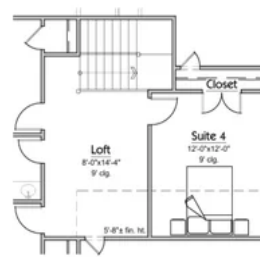
MadisonSimmonsHomes.com  
Brooke@MadisonSimmonsHomes.com  
828.540.7310



## Chapel Crossing

*The Jameson - Upgrade Options*

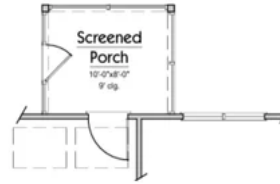
3 or 4 BR/2.5BA  
Master on Main



4th Suite w/Smaller  
Loft Option



4th Suite Over  
Garage Option  
2272 Total SF (+162)



Screened Porch  
Option



4.28.2025

