



## 112 Chapel Crossing Lane (Lot 13) Weaverville, NC 28787

### BEDROOMS

**3**

### BATHROOMS

**2 1/2**

### CAR GARAGES

**2**

### HEATED SQ. FT.

**2,110**

### PRICE

**559,990**

## Interior Highlights

- Brushed Nickel Hardware and Lighting
- Subway Tile Backsplash
- 12x24 Tile in Bathrooms
- Primary on First Floor
- 9' Ceilings
- Purchase Soon to Select from Multiple Upgrades!

## Exterior Highlights

- Craftsman Exterior
- 2-Car Garage
- Patio
- Walnut Color Front Door and Garage Door





# Floorplans



MADISON-SIMMONS  
HOMES & COMMUNITIES

MadisonSimmonsHomes.com  
Brooke@MadisonSimmonsHomes.com  
828.540.7310



## Chapel Crossing

*The Jameson*

2110 Square Feet - 3 BR/2.5BA  
Master on Main



4.28.2025



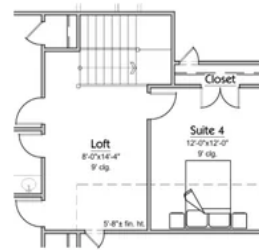
MADISON-SIMMONS  
HOMES & COMMUNITIES

MadisonSimmonsHomes.com  
Brooke@MadisonSimmonsHomes.com  
828.540.7310

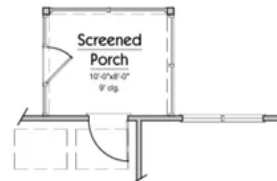


## Chapel Crossing

*The Jameson - Upgrade Options*  
3 or 4 BR/2.5BA  
Master on Main



4th Suite w/Smaller  
Loft Option



4th Suite Over  
Garage Option  
2272 Total SF (+162)

Screened Porch  
Option



4.28.2025



# Gallery



*The Jameson*

2110 Square Feet ~3 BR/2.5BA  
Master on Main

