



## 116 Chapel Crossing Lane (Lot 11) Weaverville, NC 28787

### BEDROOMS

2

### BATHROOMS

2

### CAR GARAGES

1

### HEATED SQ. FT.

1,154

### PRICE

439,990

## Interior Highlights

- Brushed Nickel Hardware and Lighting
- Walk-In Closet in Primary Suite
- Window Over Kitchen Sink
- 9' Ceilings
- One Story Plan with 2 Bedrooms and 2 Bathrooms

## Exterior Highlights

- Walnut Color Front Door and Garage Door
- Patio
- Covered Front Entry
- Single Car Garage





# Floorplans



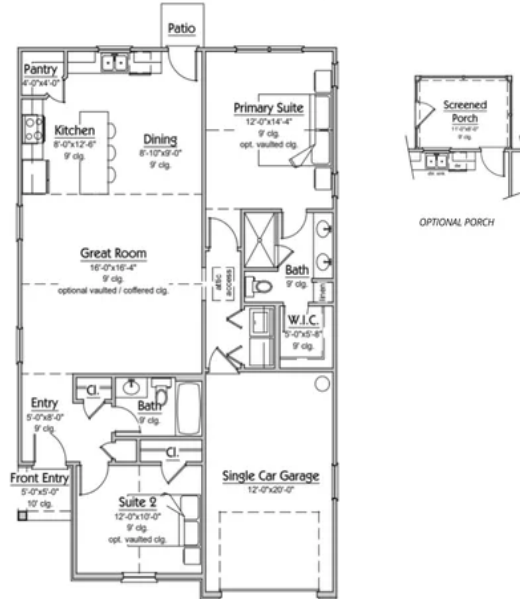
MADISON-SIMMONS  
HOMES & COMMUNITIES

MadisonSimmonsHomes.com  
Brooke@MadisonSimmonsHomes.com  
828.540.7310



## Chapel Crossing *The Brooke*

1154 Square Feet -2 BR/2 BA



4.28.2025



07.23.2025



Gallery



*The Brooke*  
1154 Square Feet -2 BR/2 BA

