



190 Cherry Springs Drive Asheville, NC 28804

BEDROOMS

3 + Loft/Flex Space

BATHROOMS

3 1/2

CAR GARAGES

1

HEATED SQ. FT.

1,625

PRICE

439,500

Interior Highlights

- Open Concept Main Living Area
- Soft Close Cabinets
- Stainless Steel Appliances
- Primary Suite on Top Level with Loft
- Quartz Countertops
- Upgraded Lighting Package
- 3 Bedrooms, 3 1/2 Baths
- Lower level room with full bathroom

Exterior Highlights

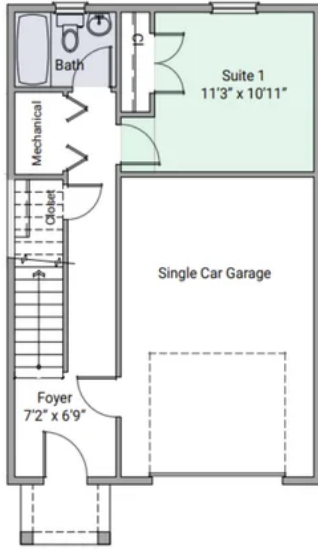
- Craftsman Style Front
- Single-Car Front Load Garage
- Interior Unit
- Lawn Maintenance Included in HOA



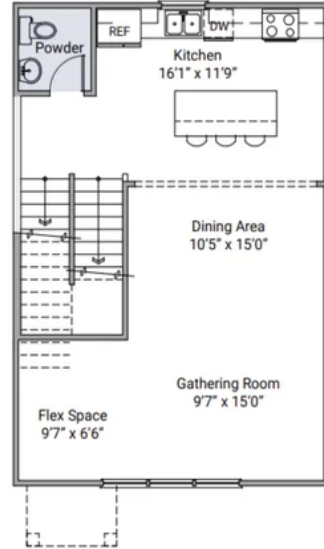


Floorplans

The Addison 1600 Plan - Garage Level

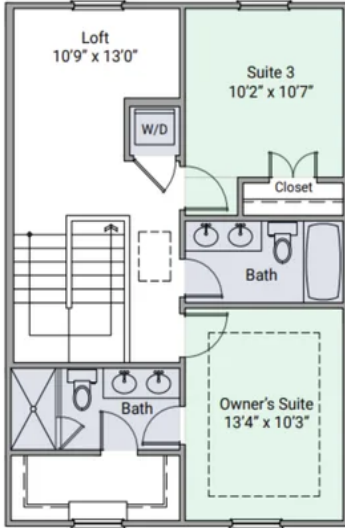


The Addison 1600 Plan - Second Level

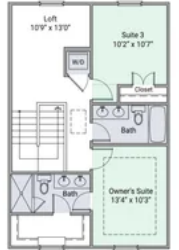
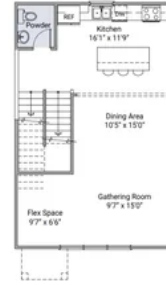
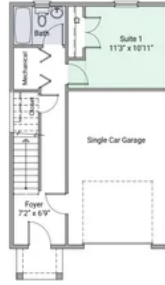




The Addison 1600 Plan - Third Level



The Addison 1600 Plan



4.12.24





Gallery

