



The Addison End Unit

PRICE	BEDROOMS	BATHROOMS	HEATED SQ FT
Starting at \$485,000	4	3 1/2	1,959
CAR GARAGES		READY TO BUILD	
2 Car Garages		Spring of North Asheville	



Home Highlights



EXTERIOR HIGHLIGHTS

- Covered Porch (some models)
- Stone or Brick Accents per Plan
 - 2-Car Garage



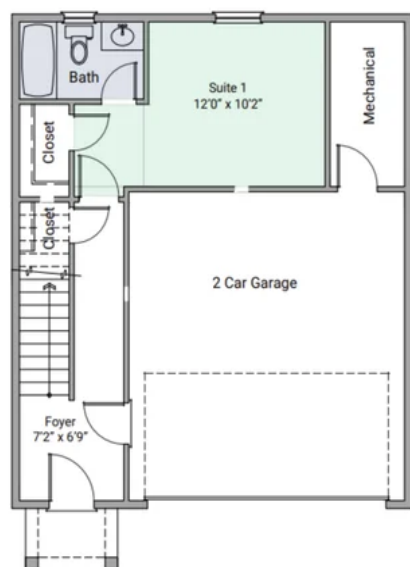
INTERIOR HIGHLIGHTS

- Open Floor Plan including Dining Area
 - 3 Levels with Flexible Space
- Large Kitchen Island with Eat In Area
- Separate Lower Level Bedroom with Full Bathroom
- Laundry Room Located with All Main Bedrooms

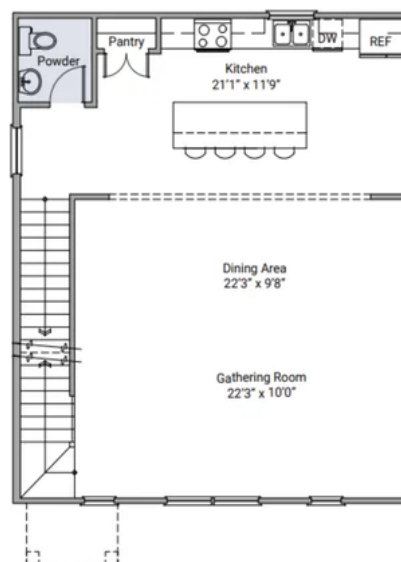


Floor Plans

The Addison 2000 Plan - Garage Level

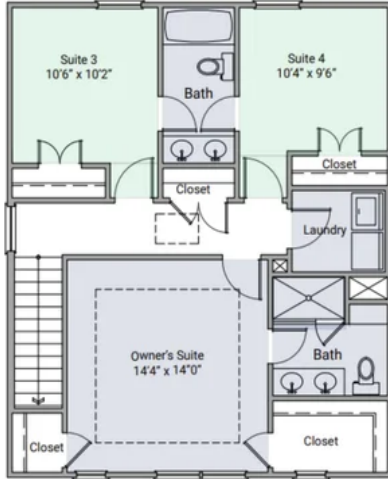


The Addison 2000 Plan - Second Level

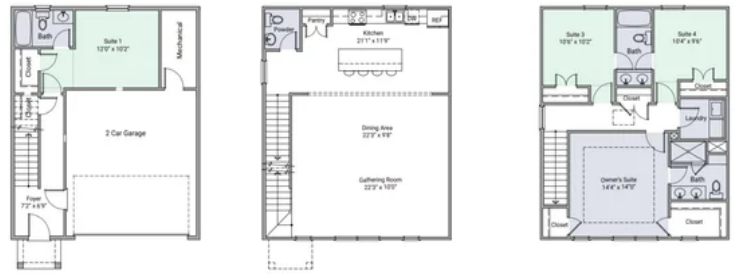




The Addison 2000 Plan - Third Level



The Addison 2000 Plan



4.12.24

Gallery Images

