



192 Cherry Springs Lane Asheville, NC 28804

BEDROOMS

4

BATHROOMS

3 1/2

CAR GARAGES

2

HEATED SQ. FT.

1,960

PRICE

499,900

Interior Highlights

- Open Concept Main Living Area and Kitchen
- Soft Close Cabinets
- Stainless Steel Appliances
- Primary Suite on Top Level with Walk-In Closet
- Quartz Countertops
- Upgraded Lighting Package
- 4 Bedrooms, 3 1/2 Baths
- Lower Level Room with Full Bathroom
- Two Secondary Bedrooms on Third Floor with Jack and Jill Bathroom
- Upgraded Matte Black Lighting and Hardware Package

Exterior Highlights

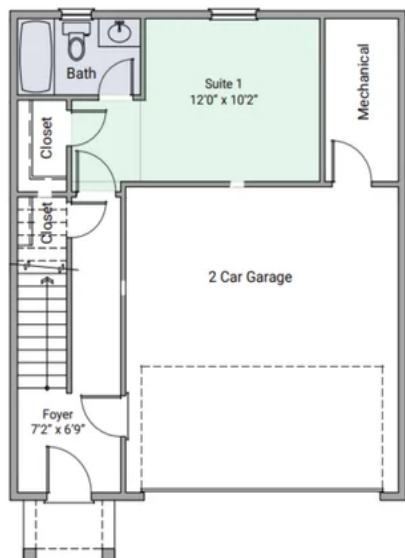
- Craftsman Style Front
- Two-Car Front Load Garage
- End Unit
- Lawn Maintenance Included in HOA



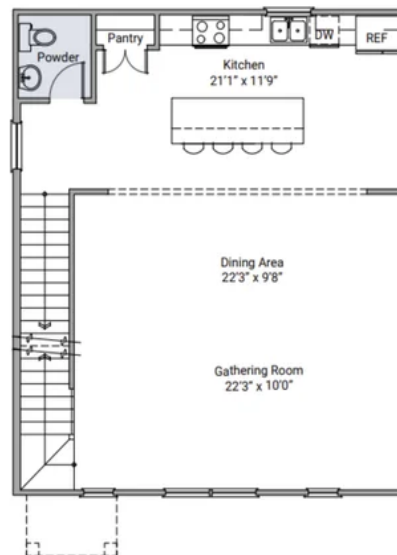


Floorplans

The Addison 2000 Plan - Garage Level

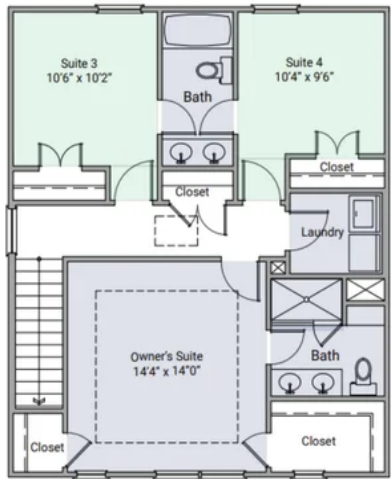


The Addison 2000 Plan - Second Level

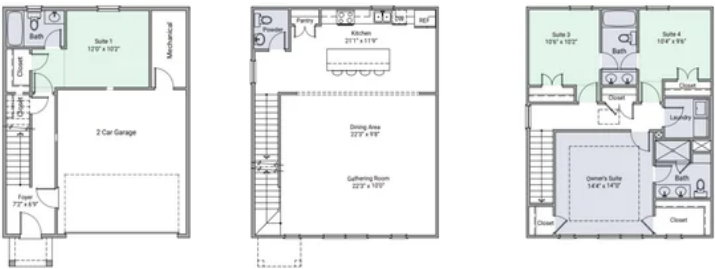




The Addison 2000 Plan - Third Level



The Addison 2000 Plan



4.12.24





Gallery

