

Workmanship, distribution systems and structural warranty

from 2-10 Home Buyers Warranty (2-10 HBW).



Workmanship Warranty ✓

The workmanship warranty provides coverage from the day of closing. It provides clearly defined construction standards for defects in materials and workmanship for the warranty term.

- | | | |
|-------------------|------------------|--------------|
| 1 Roof Covering | 6 Hardwood Floor | 11 Paint |
| 2 Cabinets | 7 Ceramic Tile | 12 Fireplace |
| 3 Countertops | 8 Drywall | |
| 4 Door Panels | 9 Interior Trim | |
| 5 Exterior Siding | 10 Carpet | |



Distribution Systems Warranty ✓

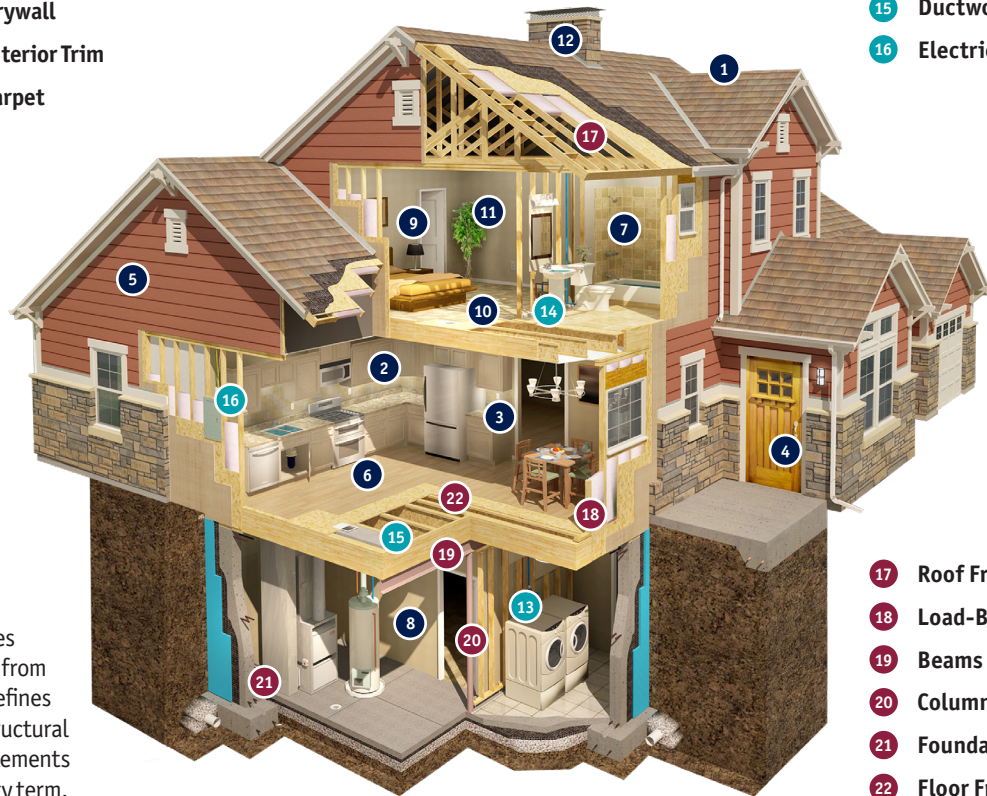
The distribution systems warranty provides coverage from the day of closing. It provides clearly defined construction standards for defects in the distribution of electrical, plumbing and mechanical systems during the warranty term.

- | |
|----------------------|
| 13 Supply Piping |
| 14 Waste Piping |
| 15 Ductwork |
| 16 Electrical Wiring |



Structural Warranty ✓

The structural warranty provides coverage for structural defects from the day of closing and clearly defines the standards related to the structural integrity of the load-bearing elements of the home during the warranty term.



- | |
|-----------------------|
| 17 Roof Framing |
| 18 Load-Bearing Walls |
| 19 Beams |
| 20 Columns |
| 21 Foundation |
| 22 Floor Framing |



Homeowners register on
2-10.com/registerhome

- Easily search your digital warranty book
- Access, view or download your Certificate of Warranty
- Exclusive Home Appliance Discounts program
- Add extended systems and appliances coverage